



RWANDA

Disability Management Information System



National Council of Persons with Disabilities



- National Council of Persons with Disabilities was established in 2010
- NCPD represents the views of persons with disabilities and is a forum for advocacy and social mobilisation on issues affecting persons with disabilities to build their capacity and ensure participation in the national development.
- NCPD assists the Government of Rwanda to implement programmes and policies that benefit persons with disabilities and strengthens the disability network in Rwanda.



Disability Issues - RWANDA

- Lack of disability data, although UNCRPD was ratified in 2008
- Identification based on medical model, only once in 5 years
- Lack of knowledge about barriers and needs of persons with disability
- Lack of support to persons with disabilities who are most in need
- Absence of use of International validated instruments such as WGQ
- No overview of disability information and service providers
- Children with disabilities under 5 years not captured in data collection
- Disability is not seen as eligible criteria for social protection



DMIS - objective

Develop a digital information system which will support NCPD and key stakeholders for

- evidence based inclusive policies,
- increased accountability,
- improved disability service delivery,
- and better coordination,

ultimately to improve living conditions of persons with disabilities in Rwanda.

Key Functions DMIS

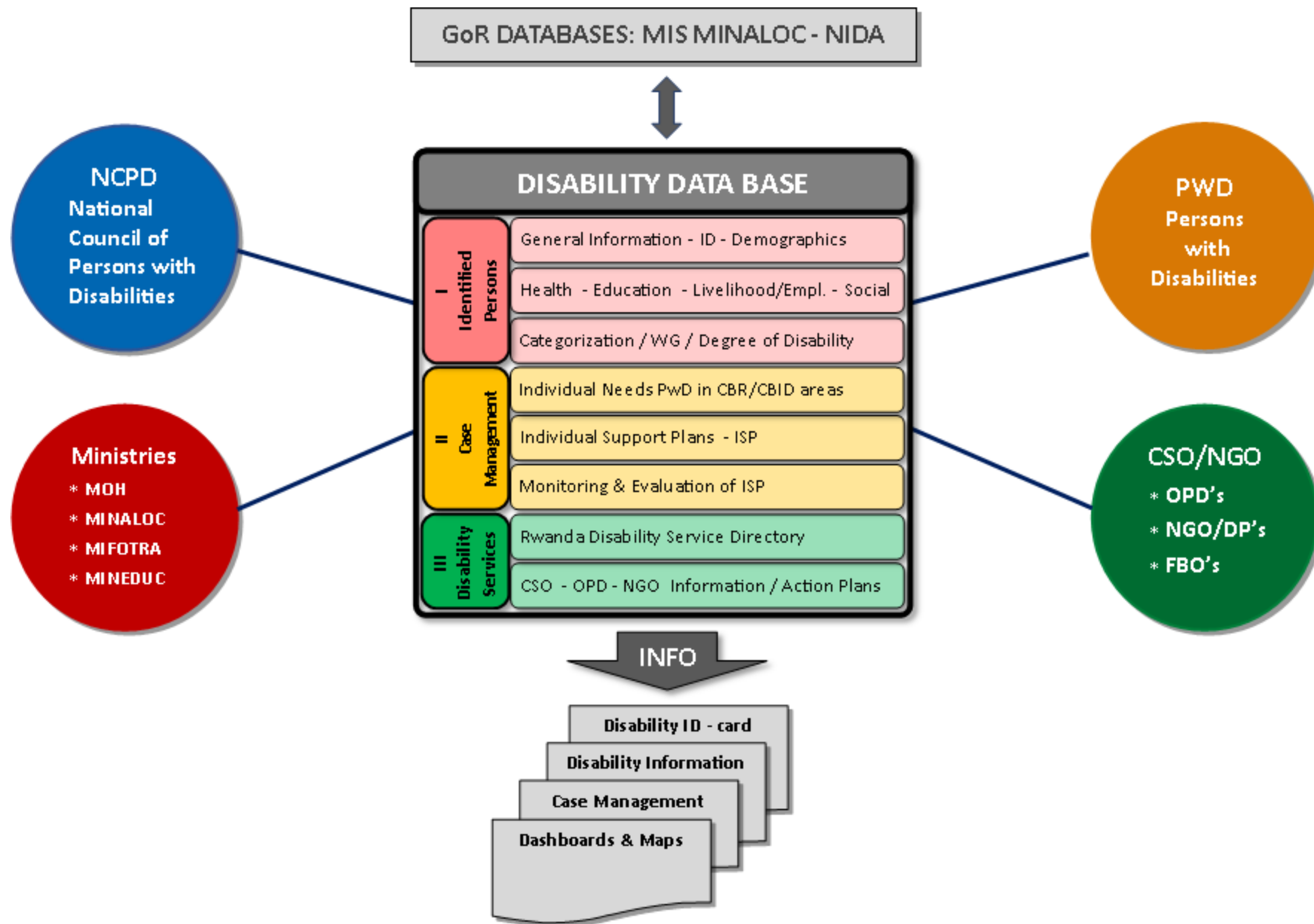


- Identification of all persons with disability in Rwanda (including children)
- Assessment of barriers, needs and priorities of persons with disability
- Database for all stakeholders in Kinyarwanda and English
- Interactive dashboards and maps with all relevant (SDG) indicators
- Case Management support for those most in need
- Information of Disability Information & Services including a Chatbot
- Link with relevant Government of Rwanda database for Social Support



Overview

DMIS Framework



DISABILITY DATA BASE

I Identified Persons

General Information - ID - Demographics

Health - Education - Livelihood/Empl. - Social

Categorization / WG / Degree of Disability

II Case Management

Individual Needs PwD in CBR/CBID areas

Individual Support Plans - ISP

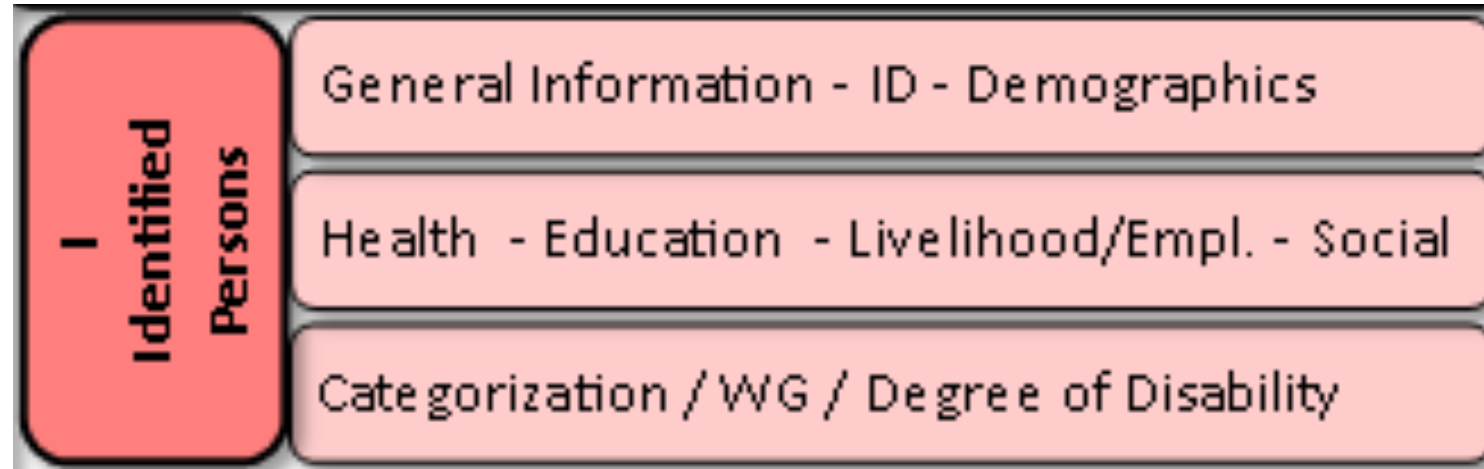
Monitoring & Evaluation of ISP

III Disability Services

Rwanda Disability Service Directory

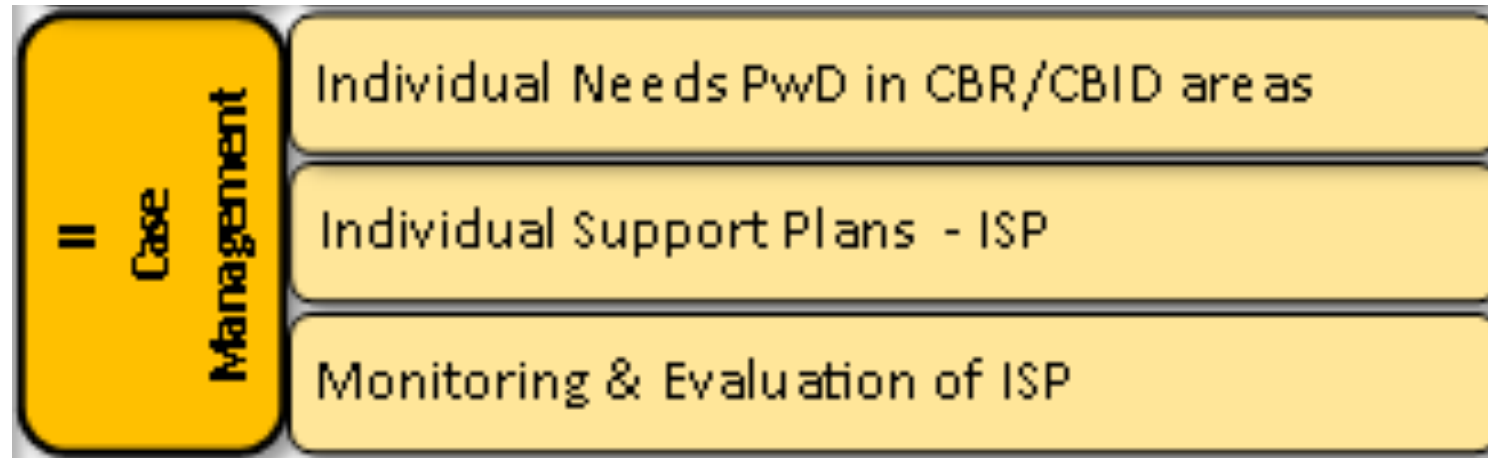
CSO - OPD - NGO Information / Action Plans

I Identified Persons with Disabilities



- ❖ General information – Demographics – Household information
- ❖ Health status, educational background, livelihood, and social life
- ❖ Categorization/Degree of Disability - WG questions - Cause of disability
- ❖ Assistive devices - Wellbeing - Environment - Barriers - Needs

II Case Management



- ❖ Assessment needs in health, education, livelihood, and social life
- ❖ Individual Support Plans (ISP) for persons most in need
- ❖ Referral to adequate support in all CBR/CBID elements
- ❖ M&E of Individual Support Plans

III Disability Services in Rwanda



- ❖ Overview Disability Information & Services in Rwanda
- ❖ Automatic 'Personal Assistant' - Chatbot
- ❖ Relevant information, reports and plans of Disability Service Providers



NCPD
National
Council of
Persons with
Disabilities

BENEFITS

- On-demand identification & categorization
- Real time dashboards & maps on indicators
- Overview disability information & services
- Individual support for most in need
- Link to database for social support

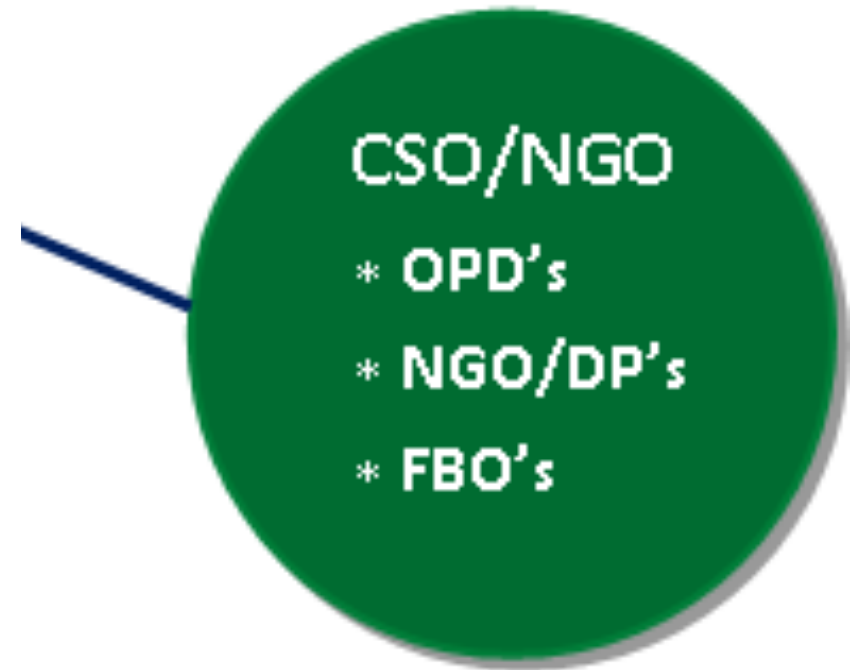
BENEFITS

- Identification and registration
- Check/update status - appeal system
- Disability ID-card, for possible benefits
- Individual support for most in need
- Disability information & services available



BENEFITS

- Registration/certification of service providers
- Real time dashboard & maps on indicators
- Uploading annual plans & reports
- Disability information for research purposes
- Mapping of local OPD members





Ministries

* MOH

* MINALOC

* MIFOTRA

* MINEDUC

BENEFITS

- Check status persons with disabilities
- Real time dashboard & maps on (SDG) indicators
- Overview disability service providers
- Comparison with census data on different levels
- Link with other databases for Social Support

INFO

Disability ID - card

Disability Information

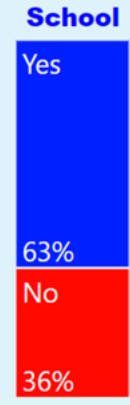
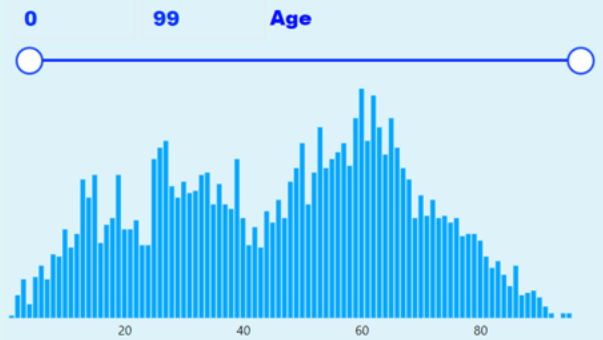
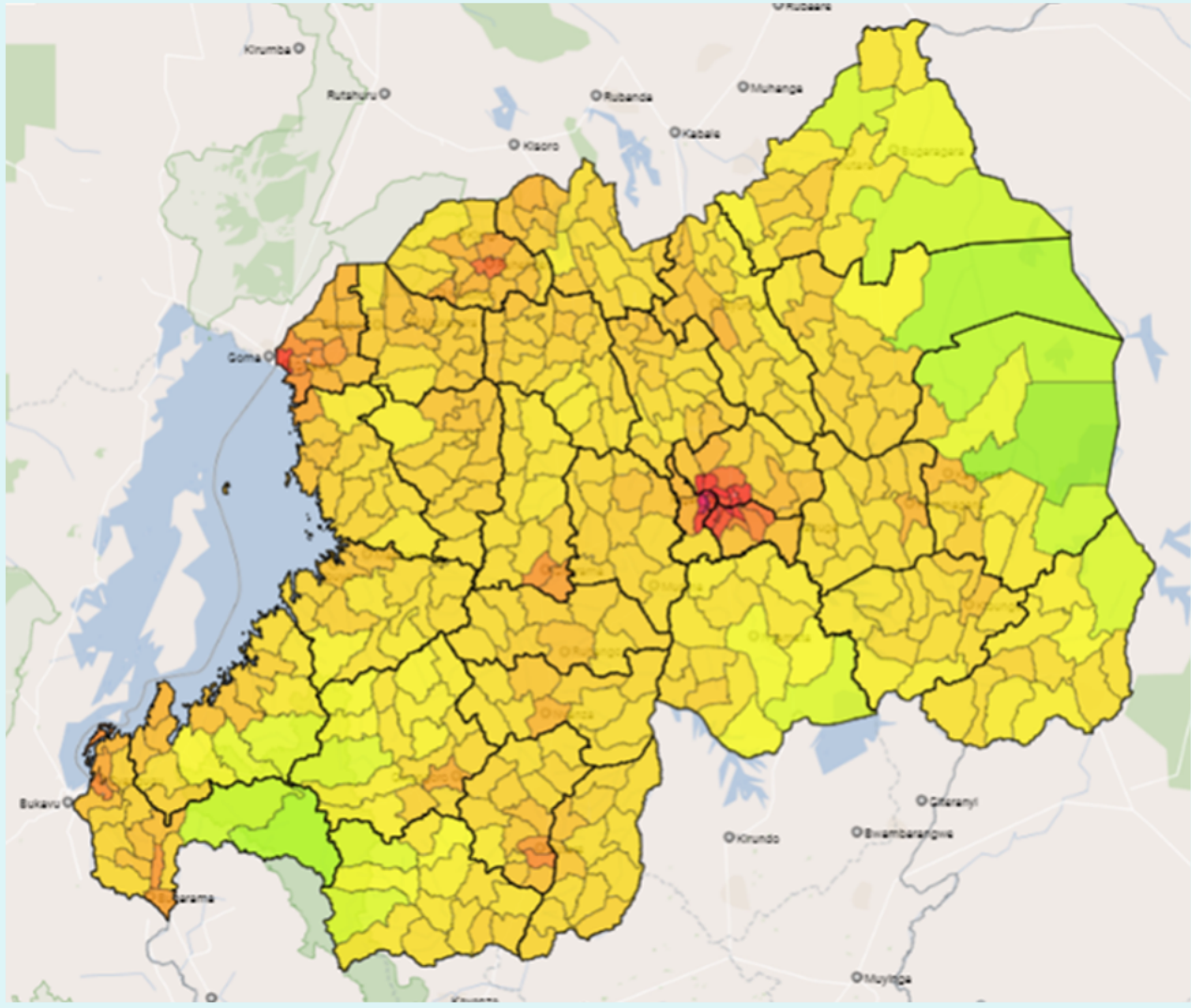
Case Management

Dashboards & Maps

Location	General	Limitations	Assistive Devices	Health Rehabilitation	Education	Livelihood Employment	Social Life Wellbeing	Empowerment	Others
----------	---------	-------------	-------------------	-----------------------	-----------	-----------------------	-----------------------	-------------	--------

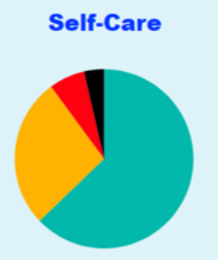
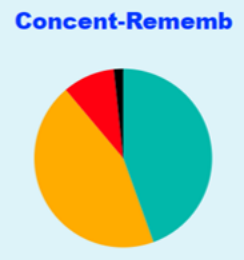
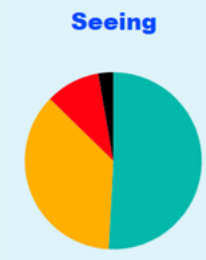
Rwanda - - - - - - - - - -

TOTAL
800,281



Male
54%

Female
46%

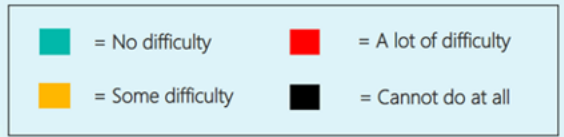
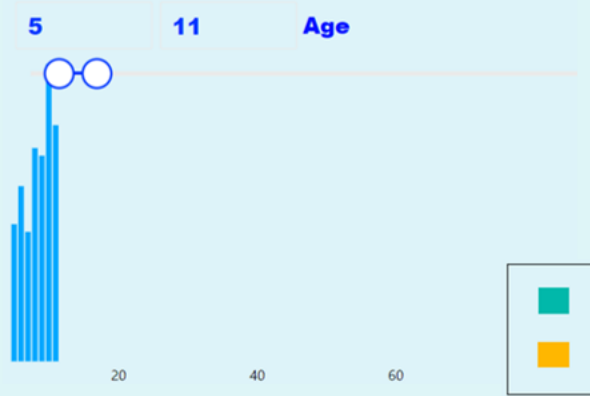
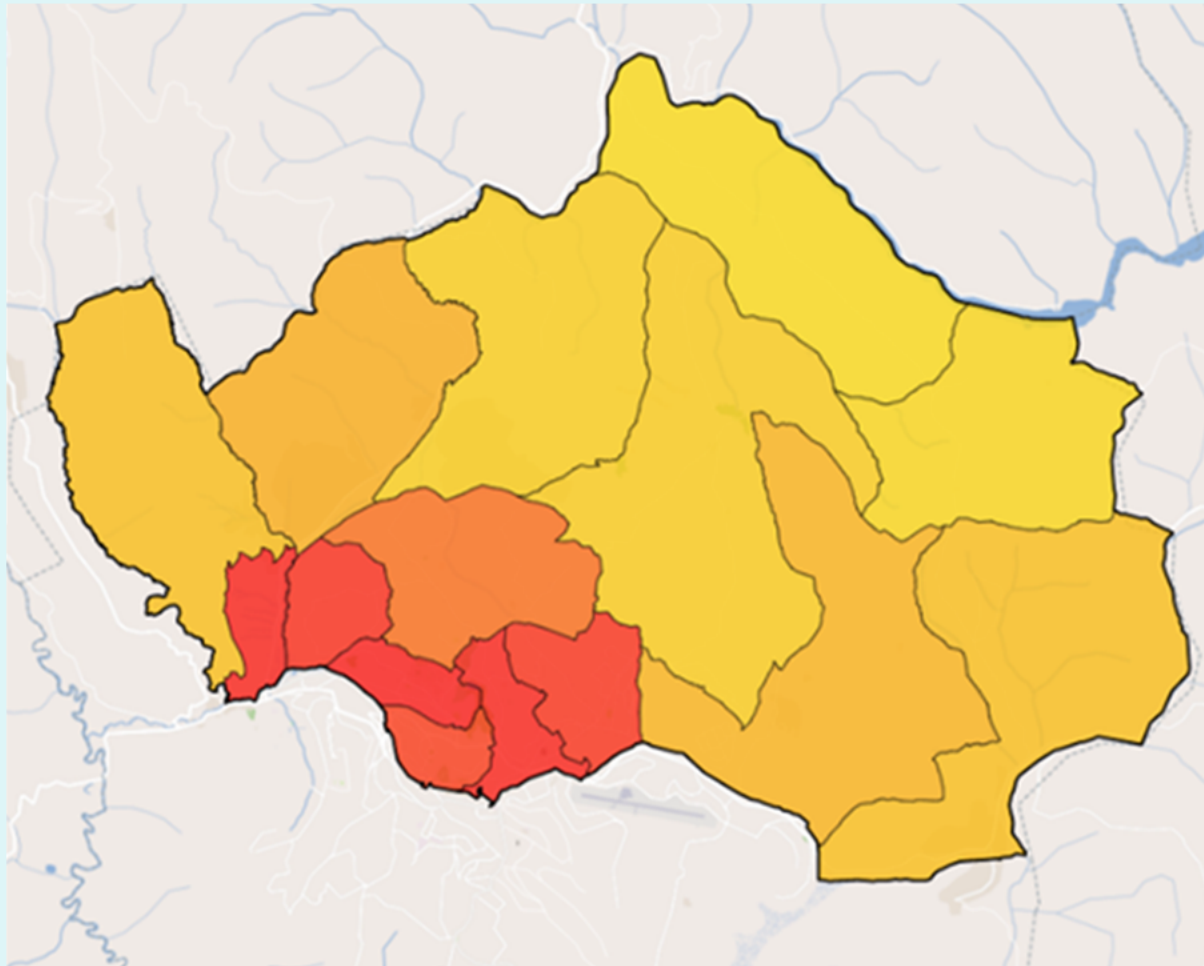


Teal = No difficulty
Orange = Some difficulty
Red = A lot of difficulty
Black = Cannot do at all

Location	General	Limitations	Assistive Devices	Health Rehabilitation	Education	Livelihood Employment	Social Life Wellbeing	Empowerment	Others
----------	---------	-------------	-------------------	-----------------------	-----------	-----------------------	-----------------------	-------------	--------

Gasabo	-	Children 5- 11 years	-	-	-	-	-	-	-
--------	---	----------------------	---	---	---	---	---	---	---

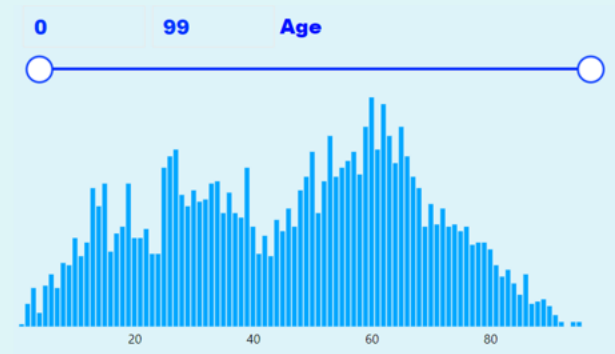
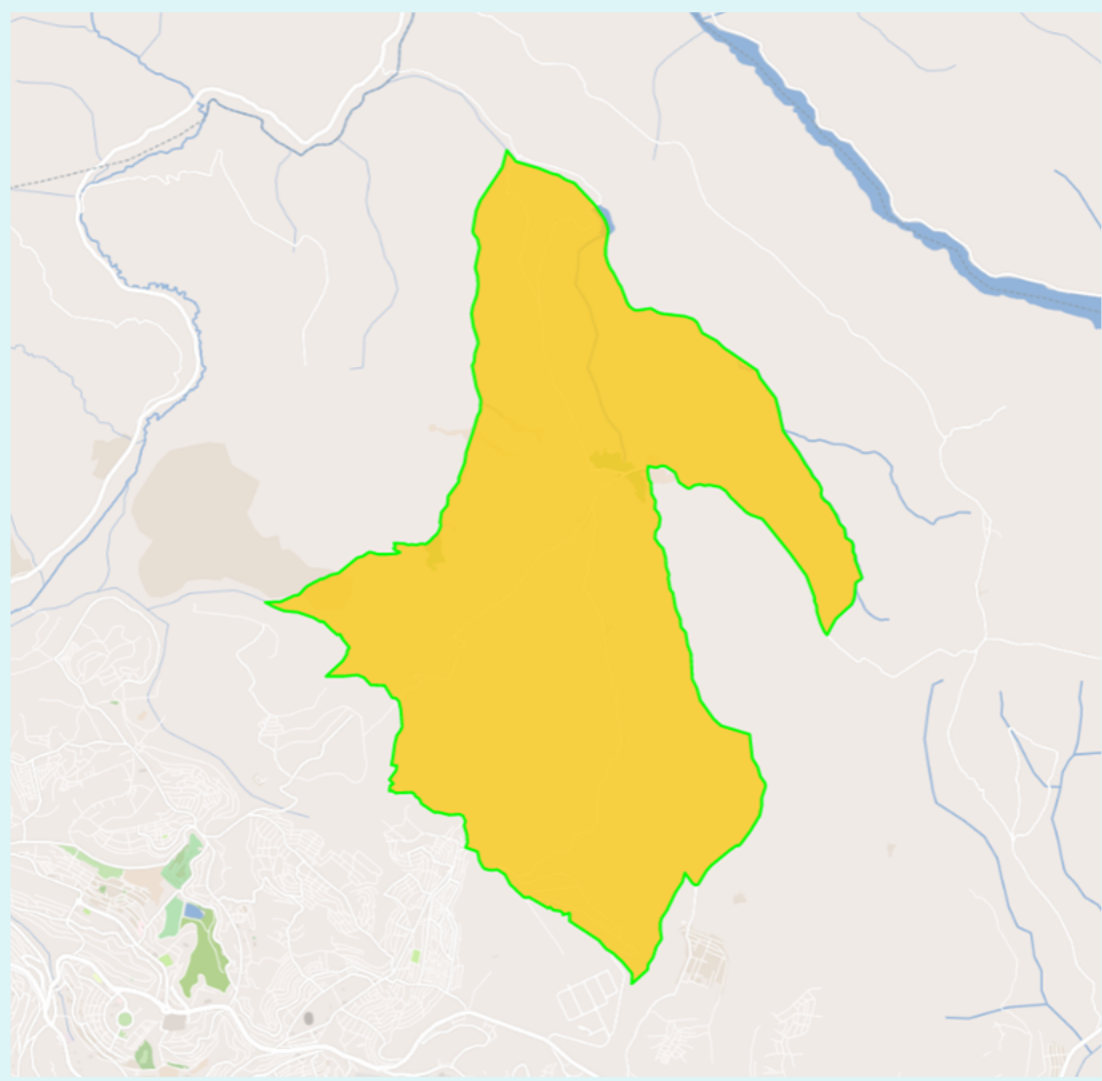
TOTAL
1,931



Location	General	Limitations	Assistive Devices	Health Rehabilitation	Education	Livelihood Employment	Social Life Wellbeing	Empowerment	Others
----------	---------	-------------	-------------------	-----------------------	-----------	-----------------------	-----------------------	-------------	--------

Gasabo Bumbogo	-	-	-	Satisfaction Health	Level Education	Work Status	Rating Life	-	-
-------------------	---	---	---	------------------------	--------------------	-------------	-------------	---	---

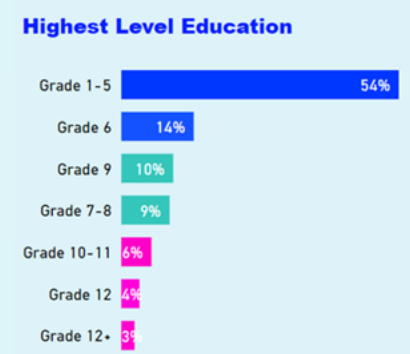
TOTAL
981



Male
54%
Female
46%



School
Yes
63%
No
36%



Job
No
68%
Yes
32%





REPUBLIC OF RWANDA
National Council of Persons with
Disabilities (NCPD)



Ikarita y'Umuntu ufite Ubumuga N°: 76765-17
Disability's Identification Card

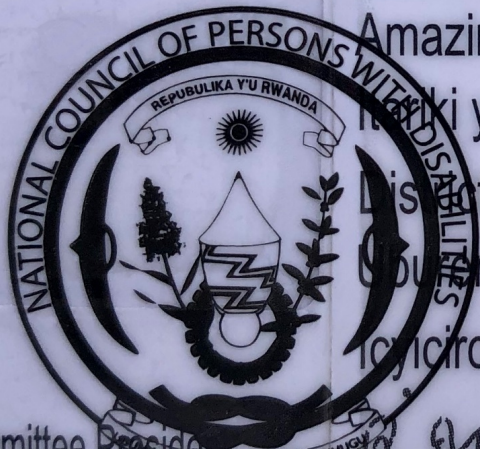
Amazina/Names: [REDACTED]

Iyamba y'amavuko/Date of birth: 01/1/1999

Aho/Location/Sector: Karongi/

Umubere bw'Ubumuga/Degree of Disability: 90%

Icyiciro cy'Ubumuga/Category of Disability: 1



Medical Committee President
Dr. MUGENZI Dominique Savio

NCPD Executive Secretary:
NDAYISABA Emmanuel

Identification – Persons with Disabilities in Rwanda

The image shows a banner for the Survey Solutions website. The background is a photograph of a dirt road in a rural area with banana trees and people walking. A woman in a white top and skirt is in the center, and a woman in a purple top and pink shorts is on the left. A person in a yellow safety vest is on the right. The text 'ULTIMATE SOLUTION FOR QUALITY SURVEY DATA' is overlaid in large white letters. Below it, 'FREE CAPI SYSTEM' is written in smaller white letters. The top of the banner has a blue header with the Survey Solutions logo and navigation links.

Survey Solutions
Version 20.09

ABOUT COVERAGE MAP DESIGNER DEMO SERVER SUPPORT STATS DOWNLOAD **SERVERS** **EN**

ULTIMATE SOLUTION FOR QUALITY SURVEY
DATA
FREE **CAPI** SYSTEM

Murakoze Cyane



Thank You